



Republic of the Philippines
 Bangsamoro Autonomous Region in Muslim Mindanao
 Ministry of Basic, Higher and Technical Education
 Cotabato City



Office of the Minister

REGIONAL MEMORANDUM


No. 065
 Series of 2023

Bangsamoro Autonomous Region in Muslim Mindanao
 Ministry of Basic, Higher and Technical Education
 OFFICE OF THE MINISTER

RELEASED

TO : **PROF. TAHIR G. NALG, MAIS**
 Director General for Madaris Education

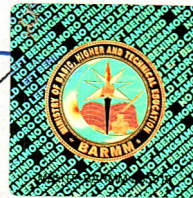
ATTENTION : **ALL CONCERNED SCHOOLS DIVISIONS SUPERINTENDENTS**

FROM : 
MOHAGHER M. IQBAL
 Minister

SUBJECT : **NOTICE OF HIRING FOR ADDITIONAL ISAL TEACHERS-ASATIDZ IN ALL BARMM SCHOOLS DIVISIONS EXCEPT MAGUINDANAO I**

DATE : January 25, 2023

BY: Nadrah
 DATE: 27 JAN 2023
 TIME: 8:53 am
 Ctrl. No. 2023-01-121



- The Ministry of Basic, Higher and Technical Education (MBHTE), through its Directorate General for Madaris Education (DGME), hereby announces that it is **NOW ACCEPTING APPLICANTS FOR THE ADDITIONAL 322 ISLAMIC STUDIES AND ARABIC LANGUAGE (ISAL) TEACHERS-ASATIDZ** in the specified schools of Cotabato City, Maguindanao II, Marawi City, Lanao del Sur I, Lanao del Sur II, Special Geographic Area, Basilan, Lamitan City, Sulu, and Tawi-Tawi divisions.
- Applicants are required to submit the following documents in order, enclosed in their assigned color folder per division:
 - Application letter indicating the particular school preferred to be deployed at, addressed to:

MOHAGHER M. IQBAL
 Minister
 Minister of Basic, Higher and Technical Education
 Bangsamoro Government Center, Cotabato City

Thru: **TAHIR G. NALG, MAIS**
 Director General
 Director General for Madaris Education

- Authenticated Transcript of Records (TOR) and Diploma in Kulliyah Tarbiyyah and any related courses in Arabic;
- One copy of the **UPDATED and DULY-NOTARIZED Personal Data Sheet (PDS)**; and
- Two copies of two valid government IDs

Republic of the Philippines
 Bangsamoro Autonomous Region in Muslim Mindanao
 Ministry of Basic, Higher and Technical Education
 INFORMATION AND COMMUNICATIONS DIVISION
 Office of the Minister

RELEASED

By: Mashun
 Date: JAN 27 2023
 Time: 9:30 am





Republic of the Philippines
Bangsamoro Autonomous Region in Muslim Mindanao
Ministry of Basic, Higher and Technical Education
Cotabato City



Office of the Minister

DIVISION	FOLDER COLOR
Cotabato City	RED
Maguindanao II	BLUE
Marawi City	VIOLET
Lanao del Sur I	GREEN
Lanao del Sur II	ORANGE
Special Geographic Areas	YELLOW
Basilan	PINK
Lamitan City	MAROON

3. All mainland applicants must submit their application folder at the office of the Director General for Madaris Education while Basilan and Lamitan City applicants shall submit their folders to their respective Division ISAL Coordinators following the given schedule per division. Selection of Sulu and Tawi-Tawi divisions applicants will be based on the previously conducted hiring therein, thus no new applicants from these two divisions will be accepted.

SCHEDULE TABLE	
Date	Division
January 30, 2023 (Morning 8-12 pm)	Cotabato City
January 30, 2023 (Afternoon 1-5 pm)	Special Geographic Area
January 31, 2023 (Whole day)	Maguindanao del II
February 1, 2023 (Whole day)	Marawi City
February 2, 2023 (Whole day)	Lanao del Sur I
February 3, 2023 (Whole day)	Lanao del Sur II
For Basilan and Lamitan City at the division office	
January 30, 2023 (whole day)	Basilan
February 1, 2023 (whole day)	Lamitan City

4. In addition, all applicants are required to strictly adhere to the following guidelines:
- applicants are required to indicate in their application letter the most preferred schools to be assigned;
 - application papers will be accepted first come, first served basis;
 - submission of applications by a second person will not be allowed;
 - applications with incomplete documents shall not be accepted;
 - applications with endorsement or recommendation letters shall not be accepted;
 - applicants shall follow the folder color assignment per division; and
 - applicants must follow the scheduled date and time assigned to every school division, late submission is strictly not allowed.
5. Attached is the list of identified schools per division with the corresponding number of ISAL teachers to be deployed therein.
6. The shortlisted applicants shall be posted for the qualifying examination and interview.



Republic of the Philippines
Bangsamoro Autonomous Region in Muslim Mindanao
Ministry of Basic, Higher and Technical Education
Cotabato City



Office of the Minister

7. The signing of the contract for the mainland shall be held at the office of the DGME while the island provinces school divisions' will be in Zamboanga City (specific venue will be announced later).
8. Further updates and information will be announced on the official Facebook pages of the MBHTE and DGME.
9. For dissemination, guidance, and compliance.

List of identified schools per division:

DIVISION	IDENTIFIED SCHOOLS TO DEPLOY NEWLY HIRED ISAL TEACHERS-ASAATIDZ	NO. ISAL TEACHERS-ASAATIDZ NEEDED
Cotabato City	CCNHS-Main Campus	5
	Cotabato City Central Pilot School	4
	Vilo CES	2
	ND Villages CES	4
	Kimpo ES	2
	Don E Sero Elementary School	1
Special Geographic Area		
Carmen	Bai Monerah Abas-Asim HS	1
	Pebpoloan High School	1
	Kibayao High School	1
	Kitulaan High School	1
	DATU PENDATUN ABAS ES	1
	KIBAYAO ES	1
	KITULAAN ES	1
	LANGOGAN ES	1
	MANARAPAN ES	1
	NASAPIAN ES	1
Kabacan	SIMBUHAY ES	1
	MULITA ES	1
	DANGLEG ES	1
	BULUAN ES	1
	SANGGADONG ES	1
	TAMPED HS	1
Midsayap	DAMATULAN ES	1
	GUNTONG ES	1
	KADIGASAN ES	1
	NABALAWAG ES	1
	KAPINPILAN HS	1
	OLANDANG NHS	1
Pigcawayan	BALACAYON ES	1
	Simsiman High School	1
	DATU DAUD RAHMAN HS	1
Pikit	BALONGIS ES	1
	DATU TUMINDEG SULTAN ISLAND ES	1
	GANASI ES	1
	GOKOTAN ES	1
	MALIK MEMORIAL ES	1
	NABUNDAS ES	1
	NUNGUAN ES	1
	NALAPAAN ES	1
	BAGOINGED ES	1
	BARUNGIS ES	1
	DAGADAS ES	1
	KABASALAN ES	1
	BUALAN ES	1
	Datu Embak Mangansing Memorial HS	1
	Gokotan HS	1
	RAJAH MUDA NATIONAL HS	1

	BULOL HIGH SCHOOL	1
MAGUINDANAO II		
DATU BLAH SINSUAT	PURA ES	2
	SINIPAK ES	1
	TUBUAN ES	2
	NALKAN ES	1
	METI PS	1
	KINIMI ES	1
	LAGUITAN PS	1
KABUNTALAN NORTH	GAYONGA CENTRAL ELEM. SCH.	1
	TUMAGUINGTING ELEM. SCH.	1
	BALONG ELEMENTARY SCH.	1
	MANAMPEN ELEM. SCHOOL	1
	P. ANTIPOLO SR. ELEM. SCH.	1
	PANGAMBITAN PRIMARY SCHOOL	1
KABUNTALAN SOUTH	DADTUMEG ES	1
	KATIDTUAN ES	1
	MAITONG ES	1
	BUTILEN PS	1
	PAGALUNGAN PS	1
	MATILAK PS	1
PARANG BONGO	Biruar Central ES	3
	Kutongan ES	1
	Talaubang PS	1
	Gadungan Pebpandaran PS	1
SULTAN MASTURA	BALUT ES	1
	DAGURUNGAN ES	1
	DATU PANDA ES	1
	DARPING ES	1
	TAPAYAN CES	1
	TAMBO ES	1
	TARIKEN ES	1
	TUKA ES	1
UPI NORTH	Nuro Central ES	1
	Mirab ES	1
	Kibleg ES	1
LANAO DEL SUR I		
SOUTH WAO	Katutungan Elementary School	1
	KATUTUNGAN NORTE EMENTARY SCHOOL	1
	MILAYA ELEMENTARY SCHOOL	2
	PAGALONGAN COMMUNITY CENTRAL ELEMENTARY SCHOOL	3
WAO I	KABATANGAN ELEMENTARY SCHOOL	1
POONA BAYABAO NORTH	BANGON-DOLAWAN PRIMARY SCHOOL	1
	GADONGAN ELEMENTARY SCHOOL	1
	LABUAN PRIMARY SCHOOL	1
MASIU A	LOMIGIS SAPTO ELEMENTARY SCHOOL	1
	Minanga Elementary School	1
MAGUING II	Madaya Elementary School	1
	MALUNGUN ELEMENTARY SCHOOL	1
	Siawadato Elementary School	1

MAGUING 1	BOROCOT CENTRAL ELEMENTARY SCHOOL	2
	BOTOD PRIMARY SCHOOL	1
	DILIMBAYAN PRIMARY SCHOOL	1
	MAGUING PROPER ELEMENTARY SCHOOL	1
DITSAAN RAMAIN 1	PAGALONGAN CENTRAL ELEMENTARY SCHOOL	1
	PUGAAN ELEMENTARY SCHOOL	2
BUMBARAN	Comara Elementary School	3
	Francfort Central Elementary School	2
	NATANGCOPAN PRIMARY SCHOOL	1
	PUNUD ELEMENTARY SCHOOL	2
	SALAM PRIMARY SCHOOL	1
	SUMUGOT ELEMENTARY SCHOOL	1
BUBONG I	BUBONG ELEMENTARY SCHOOL	1
	PANALAWAN MONTIA-AN CENTRAL ELEMENTARY SCHOOL	2
	PINDOGUAN ELEMENTARY SCHOOL	3
BALINDONG II	BALINDONG CENTRAL ELEMENTARY SCHOOL	1
BUADIPOSO BUNTONG	ABEDIN MEMORIAL NATIONAL HIGH SCHOOL	3
PIAGAPO	Acoon Memorial National High School	2
LUMBA-BAYABAO	AGUAM MEMORIAL NATIONAL HIGH SCHOOL	2
AMAI MANABILANG	Amai Manabilang Memorial National High School	2
TARAKA	AMBOR MEMORIAL NATIONAL HIGH SCHOOL	2
BALINDONG	BALINDONG NATIONAL HIGH SCHOOL	4
LANAO DEL SUR II		
BACOLOD-KALAWI	KALAWI CES	2
	TULAIN ELEMENTRY SCHOOL	1
	TAMBO PRIMARY SCHOOL	2
	TALOB PRIMARY SCHOOL	1
	ULODAN ELEM. SCHOOL	2
	BACOLOD CES	2
	AWANI ES	2
	PINDULONAN ES	2
	RAYA ELEMENTARY SCHOOL	1
BALABAGAN	LALABUAN ELEM. SCH.	2
	MOLIMOC ELEM. SCH.	1
	BALABAGAN CENTRAL ELEM. SCH.	1
	BARORAO CENTRAL ELEM. SCH.	2
	MATAMPAY ELEM. SCHOOL	2
	MAGULALONG ELEM. SCH.	2
	TATAYA ELEM. SCHOOL	2
BAYANG	DANDAMUN CES	2
	RANTIAN ELEM. SCHOOL	2
	SAMPORNA ES	2
	LINUK PRIMARY SCHOOL	1
	GANDAMATO PS	1
	TOMAROMPONG PS	1

	SUMBAG PS	1
	MAUYAG C PAPANDAYAN NHS	2
MADAMBA	LAKITAN NHS	2
TUBARAN	TUBARAN PROPER NHS	2
LUMBAYANAGUE	NANAGUN NHS	3
MALABANG	TUBOK NHS	2
	MALABANG NHS	5
BALABAGAN	MIKUNUG MEMORIAL NHS	2
MARAWI CITY		
MARAWI CITY	ROROGAGUS ELEMENTARY SCHOOL	1
	NANAPUN ELEMENTARY SCHOOL	1
	CALOCAN ELEMENTARY SCHOOL	1
	MARAWI CENTRAL ELEMENTARY PILOT SCHOOL	8
	BAE INOMBA BLO BACARAT CENTRAL ELEMENTARY SCHOOL	1
	SULTAN CODING ELEMENTARY SCHOOL	5
	ANGOYAO CENTRAL ELEMENTARY SCHOOL	2
	ANGOYAO NATIONAL HIGH SCHOOL	3
BASILAN		
MALUSO	CALANG E/S	2
	LOWER MAHAYAHAY P/S	1
	MALUSO CENTRAL E/S	2
	PALI ES	1
	TUBIGAN ES	1
	PORT HOLLAND CES	5
	SHIPYARD ES	2
	LAUD ELEM	3
	UPPER TABERLONGAN ES	2
	HJ. MUHTAMAD MUNICIPALITY	BALUK-BALUK ES
DASALAN ES		2
KAINAHAN PS		1
LUKBUNGSOD ES		2
MANANGGAL PS		1
PALAHANGAN ES		1
PANDUCAN ES		1
SALISA PS		1
SANGBAY BIG ES		2
SANGBAY SMALL ES		2
TAUSAN ES		2
SUMISIP EAST DISTRICT	TUMAHUBONG CES	2
	CABENGBENG ES	1
SUMISIP SOUTH DISTRICT (TABUAN LASA)	BABAG ES	1
	BALANTING ES	2
	BUKUTUMUS ES	2
	KAUMPURNAH ES	1
	LANAWAN CES	2
	PISAK-PISAK ES	1
	SALUPING ES	1
	SULLOH ES	1
	TAMBULIGBUTON ES	1
	TINUTUNGAN ES	1

	TONGUMUS ES	1
TUBURAN DISTRICT - MOHAMMAD AJUL, TUBURAN AND AKBAR MUNICIPALITY	BASAKAN ES	1
	CALUT ES	1
	LANGIL WEST PS	1
LAMITAN CITY		
LAMITAN CITY	LAMITAN NATIONAL JUNIOR HIGH SCHOOL	6
	LAMITAN NATIONAL SENIOR HIGH SCHOOL	2
	PARANGBASAK NATIONAL JUNIOR HIGH SCHOOL	2
	PARANGBASAK NATIONAL SENIOR HIGH SCHOOL	2
	LAMITAN CENTRAL ELEMENTARY SCHOOL	2
	MAGSAYSAY ELEMENTARY SCHOOL	2
Note: The selection of the Sulu and Tawi-Tawi divisions' applicants will be based on the ranking result of the previously conducted hiring therein and the municipal localization of applicants where the following schools are situated.		
SULU		
SIASI	SIASI EAST ELEMENTARY SCHOOL	2
	PANGLIMA JULKANAIN TAUP CES	1
Laminusa District/SIASI	LAMINUSA WEST ES	2
LUUK	CAMP ANDRES CENT. SCHOOL	1
PATA	KIPUT ES	1
PANGUTARAN	SIMBAHAN C/S	2
	PANDAN NIOG E/S	1
TAWI-TAWI		
SITANGKAI	TONGMAGING ES	1
	DATU DAWILA PS	1
TANDUBAS	HIMBA PS	1
	BATO PS	1
SIBUTU	NUNUKAN ES	1
	HJI. MOKTAR SULAYMAN ES	1
TURTLE ISLAND	TAGANAK	1
	BOAN ES	1
MAPUN	IMAAM SAAT ES	1
	BOKI ES	1