



Republic of the Philippines
 Bangsamoro Autonomous Region in Muslim Mindanao
 Ministry of Basic, Higher and Technical Education
 Cotabato City



Office of the Minister

REGIONAL MEMORANDUM

No. 145
 Series of 2023

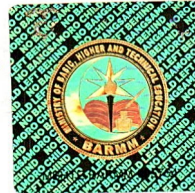
Bangsamoro Autonomous Region in Muslim Mindanao
 Ministry of Basic, Higher and Technical Education
 OFFICE OF THE MINISTER

RELEASED

BY: Hajir
 DATE: 21 FEB 2023
 TIME: 9:45 Am
 Ctrl. No. 2023-02-139

TO : ALL SCHOOLS DIVISION SUPERINTENDENTS
 ALL OTHERS CONCERNED

FROM : 
 Mohagher M. Iqbal
 Minister



SUBJECT : TIMELINE FOR THE INCLUSIVE SCHOOLS APPROACH SIMULATION

DATE : February 17, 2022

1. This has reference to the issued MBHTE Regional Memorandum No. 388, s. 2022 dated April 13, 2022, regarding the **Inclusive Education: Inclusive Schools Approach (ISA) Simulation**.
2. Please be informed that said activity will follow a new timeline and shall be implemented on **January- April 2023**.
3. Kindly see Annex A for further details and reference.
4. For information and guidance.

Republic of the Philippines
 Bangsamoro Autonomous Region in Muslim Mindanao
 Ministry of Basic, Higher and Technical Education
 INFORMATION AND COMMUNICATIONS DIVISION
 Office of the Minister
 RELEASED
 By: FANDER ABDM
 Date: FEB 21 2023
 Time: 12:40 AM
 Control No.: 2023-02-139



ANNEX A: Key activities

Dates and venues may be subject to change due to evolving health protocols. Such changes will be communicated directly to the participants in a timely manner.

Date		Activity	Target participants
NEW SCHEDULE			
February 25, 2023	22-	Transition Training for the pilot ISCL staff	Regional Technical Working Group (RTWG) Inclusion Reference Group TTG Consultants and Specialists Pilot ISCL key staff
April 2023		ISA pilot simulation in Timanan Central Elementary School, Timanan, South Upi	Regional Technical Working Group (RTWG) Inclusion Reference Group Pilot ISCL key staff
April 2023		Pilot ISA Simulation Debriefing and Workshop to restructure initial ISA guidelines and program components based on the inputs from the pilot simulation	Regional Technical Working Group (RTWG) Inclusion Reference Group TTG Consultants and Specialists Pilot ISCL key staff