



Republic of the Philippines
Bangsamoro Autonomous Region in Muslim Mindanao
Ministry of Basic, Higher and Technical Education
 Cotabato City



Office of the Minister

Bangsamoro Autonomous Region in Muslim Mindanao
 Ministry of Basic, Higher and Technical Education
 OFFICE OF THE MINISTER

REGIONAL MEMORANDUM

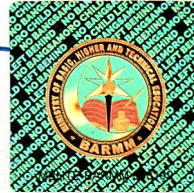
No. 489
 Series of 2023 8

RELEASED
 BY: A-jin
 DATE: 19 JUN 2023
 TIME: 1:30 PM
 Ctrl. No. 2023-014 222

TO : **ABDULLAH P. SALIK JR.**, Director General for Basic Education
JOHNNY G. BALAWAG, Director of the Bureau of Basic Education
YUL ADELFO V. OLAYA, Chief of Curriculum and Instruction Division
MARGIE G. PENDULAT, Chief of Quality Assurance Division
ALL SCHOOLS DIVISION SUPERINTENDENTS
ALL OTHERS CONCERNED

Republic of the Philippines
 Bangsamoro Autonomous Region in Muslim Mindanao
 Ministry of Basic, Higher and Technical Education
 INFORMATION AND COMMUNICATIONS DIVISION
 Office of the Minister
RELEASED
 By: Jenick Solano
 Date: JUN 19 2023
 Time: 1:30 PM
 Control No. 2023-66-222

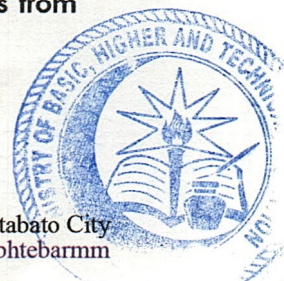
FROM : **MOHAGHER M. IQBAL**
 Minister



SUBJECT : **CONDUCT OF THE BARMW-WIDE GRADE SIX LEARNING NEEDS ASSESSMENT**

DATE : June 15, 2023

1. The Covid-19 pandemic has severely affected the academic performance of all learners globally. In the Philippines, the entire school system has been hugely affected causing so much learning losses and worsen learning gaps. In the Bangsamoro Autonomous Region in Muslim Mindanao (BARMM), the Ministry of Basic, Higher and Technical Education (MBHTE) together with the Education Pathways to Peace in Mindanao conducted research titled "Students' Learning Assessment in the Bangsamoro" which was participated by 4490 K-3 learners in the region conducted in the School Year (SY) 2020-2021. Generally, the results yielded that Grade 3 pupils perform at the level of Grade 1.
2. The result of the said research was also one of the bases which the Ministry considered in the development of the Learning Recovery Plan through the Bawat Bata sa Bangsamoro, Bumabasa at Bumibilang (5Bs) Program.
3. In the same manner, the Ministry finds it compelling to also identify the current performances of the Grade 6 pupils which may also provide the Ministry better picture on the academic status of the said grade level. It is also important to note that Grade 6 pupils of the current SY were Grade 4 at time of the pandemic and were not participants to the SLAB research.
4. **The objective of this assessment is to determine the academic performance of Grade 6 learners which will be used to inform the in-service training of teachers in the MBHTE. This activity will involve the collection of achievement data in Mathematics, Science, Araling Panlipunan, Filipino, and English of learners from sampled schools in the 11 schools division offices (SDOs) in BARMM.**





Republic of the Philippines
Bangsamoro Autonomous Region in Muslim Mindanao
Ministry of Basic, Higher and Technical Education
Cotabato City



Office of the Minister

5. Hence, the Ministry, through the Office of the Director General for Basic Education (DGBE) in partnership with the University of the Philippines Assessment, Curriculum and Technology Research Centre (ACTRC) shall conduct the **Grade 6 Learning Assessment in selected schools in the 11 SDOs on July 3-6, 2023**. On July 3 shall be allotted for final preparation and arrangements, July 4-5 shall be the test administration proper, and July 6 shall be for debriefing.
6. For this purpose, the Learning Needs Assessment (LNA) Committee shall be constituted (see Attachment 1 for the composition).
7. The committee shall provide the guidelines on the conduct of this activity and shall be coordinated to the SDOs. The guidelines shall contain the manner of selection of schools, tasks assignments, and other related matters. All these shall be coordinated by the committee to all concerned.
8. The LNA is NOT intended to measure the overall performance of participating schools NOR will have any bearing in any performance rating of either the teachers or the school heads.
9. For any concerns, questions, or clarifications, please see Attachment 2 "FAQs About the Grade 6 BARMM Learners Assessment" and Attachment 3 "List of participating Schools" and please directly contact Project Leaders, Dr. Therese Bustos (t.bustos@actrc.org; +63 917866478, Abdulbasit L. Talicop 09475862852, Clarissa Kempao at 09166038142.
10. For information and guidance.

RECEIVED
2023.07.01

Attachment 1

Composition of Learning Needs Assessment Committee

1. Yul A. Olaya, Chief of Curriculum and Instruction Division, DGBE
2. Margie G. Pendulat, Chief of Quality Assurance Division, DGBE
3. Clarissa Kempao, Chief Regional Students Assessment Section, DGBE
4. Crisalyn Miraato
5. Norilyn Sabdulla
6. Nor-ain Sani
7. Ammier Dodo
8. Abdulbasit L. Talicop
9. ACTRC Team
- 10.

FAQs about the Grade 6 BARMM Learners Assessment

What is the objective of the testing activity?

The objective of this assessment is to determine the academic performance of Grade 6 learners which will be used **to inform the in-service training of teachers in MBHTE-BARMM**. This activity will involve the collection of achievement data in Mathematics, Science, Araling Panlipunan, Filipino and English of learners from sampled schools in eleven (11) divisions in BARMM

What is the assessment all about?

The **Grade 6 BARMM Learners Assessment** is composed of tests assessing academic achievement in the learning areas of **Mathematics, Science, Araling Panlipunan, Filipino, and English**. These are classroom-administered paper and pencil tests. Each test consists of 30 multiple-choice questions. The entire session will take approximately 4 hours or half a day. The table below shows the flow of activity with the target start time and end time.

Table 1

Flow of Activities and Time

Activities	Start	End	Duration
Set-up and Preparations	7:00	7:30	0:30
General Directions	7:30	7:40	0:10
Test Administration Proper			
Test 1	7:40	8:20	0:40
Test 2	8:20	9:00	0:40
Test 3	9:00	9:40	0:40
BREAK	9:40	10:00	0:20
Test 4	10:00	10:40	0:40
Test 5	10:40	11:20	0:40

Who are the people involved?

This activity is spearheaded by the Ministry of Basic, Higher, and Technical Education (MBHTE) through the Office of Directorate General for Basic Education (DGBE) in partnership with the University of the Philippines Ugnayan ng Pahinungod and Assessment, Curriculum, and Technology Research Centre (ACTRC). Staff from the said institutions will serve as test monitors.

Test Monitors. ACTRC staff, UP Ugnayan ng Pahinungod staff, DGBE Team and the Division Testing coordinators shall serve as test monitors during the administration of G6 Learners Assessment.

A day **before the test administration**, the test monitors should do the following:

1. Do a courtesy visit to the Division Office.
2. Do an ocular inspection of all participating schools, and check the testing rooms and the distribution room.

On the day of test administration, the test monitors are tasked to do the following:

1. Bring the test materials to the school on the day of test administration.
2. Distribute the appropriate materials to the assigned test administrator.
3. Monitor and supervise the test administration.
4. Collect all the test materials from the test administrators.
5. Secure all the answer sheets.
6. Prepare the test booklets and other materials for the test administration the next day.

School Testing Coordinator. The teacher nominated by the principal to act as the point person shall serve as the school testing coordinator. He/she will assist the team in the conduct of the test.

Test Administrators. Teachers within the selected school who are not teaching Grade 6 learners shall serve as test administrators. They shall administer the test according to the test administration manual provided. The test administration guidelines will be further explained during the online orientation.

What information and support do we need before the test administration?

We have an initial list of schools from each division. Upon getting the endorsement of the Schools Division Superintendent (SDS), we will also seek the consent of the school head (SH) in the conduct of tests in his/her school and Grade-6 students. The list below shows the things we will be requesting from the participating school.

- A **distribution room** where the test materials will be secured, distributed, and retrieved. The room must be accessible to all testing rooms.
- **Testing rooms** must be well ventilated and can accommodate a section of Grade-6 learners. The testing room must also be free from any distractions and noise on the day of test administration.
- **Class list** of participating G6 learners (in alphabetical order, not sorted by gender) who will be assigned to a testing room.
- Names together with email addresses and FB accounts of the **test administrators** nominated by the principal. They should be non-grade 6 teachers in the school.
- Name together with an email address and FB account of the **point person** nominated by the principal. He/she will assist the entire team during the test administration.

How will nominated teachers get more details about their roles and tasks?

- There will be an online orientation for all involved in the testing activity. This includes the division testing coordinators, school heads, and teachers who will serve as test administrators and point persons during the conduct of the test. In this orientation, specific details about the testing activity will be discussed. A recorded video of the orientation will also be distributed in case some testing personnel will miss the orientation or want to review their roles.

Test Sites

No.	Division	Category	District	School	School ID	(2021-2022)	(2022-2023)
1	Basilan	Small	Tuburan	Lubukan CES	133210 - Tuburan CES	288	50
2	Basilan	Medium	Sumisip East	Cabengbeng ES	133117 - Cabengbeng E	393	62
3	Basilan	Large	Lantawan	Tairan ES	133046 - Tairan ES	580	76
4	Basilan	Very Large	Maluso East	Maluso CES	133055 - Maluso CES	2088	280
5	Cotabato City	Medium	Cotabato City	PC Hill ES	131243 - P.C. Hill Eleme	303	65
6	Cotabato City	Large	Cotabato City	Bubong ES	131246 - Bubong Eleme	725	105
7	Cotabato City	Very Large	Cotabato City	Sero CS	131244 - Sero Central S	3402	447
8	Cotabato City	Very Large	Cotabato City	Notre Dame Village CES	131252 - Notre Dame Vi	2293	309
9	Lamitan City	Small	Lamitan West	San Jose CS	133016 - San Jose Cent	272	46
10	Lamitan City	Medium	Lamitan East	Campo Uno ES	132983 - Campo Uno ES	480	80
11	Lamitan City	Large	Lamitan West	Sta. Clara CES	133017 - Sta. Clara Cen	796	100
12	Lamitan City	Very Large	Lamitan East	Lamitan CES	132986 - Lamitan CES	2242	359
13	Lanao del Sur I	Small	Taraka I	Ilian-Dilabayan ES	133499 - Ilian-Dilabayan	285	45
14	Lanao del Sur I	Small	Balindong I	Moriatao Bae ES	215517 - Moriatao Bae E	295	42
15	Lanao del Sur I	Medium	Balindong I	Lilod ES	133219 - Lilod ES	526	73
16	Lanao del Sur I	Medium	Masiu II	Pangandaman CES	133388 - Pangandaman	537	63
17	Lanao del Sur I	Large	Ditsaan-Ramain	Pagalongan CES	133271 - Pagalongan C	755	94
18	Lanao del Sur I	Large	Ditsaan-Ramain	Rantian ES	133275 - Rantian ES	632	95
19	Lanao del Sur I	Very Large	Piagapo	Udalo ES	133447 - Udalo ES	969	110
20	Lanao del Sur I	Very Large	Saguwaran I	Saguwaran CES	133451 - Saguwaran CES	966	152
21	Lanao del Sur II	Small	Kapatagan	Proper Kapatagan ES	216006 - Proper Kapata	250	45
22	Lanao del Sur II	Small	Lumbayanague	Wago Deromoyod ES	133703 - Wago Deromo	292	53
23	Lanao del Sur II	Small	North Pualas	Pualas CES	133807 - Pualas Central	275	60
24	Lanao del Sur II	Medium	Binidayan	Dimaporo CES	133613 - Dimaporo CES	469	73
25	Lanao del Sur II	Medium	North Malabang	Tubok ES	133750 - Tubok ES	514	91
26	Lanao del Sur II	Large	Lower Bayang	Rantian ES	133604 - Rantian Eleme	645	91
27	Lanao del Sur II	Large	Kapatagan	Don Pablo Hofer ES	133586 - Don Pablo Hof	711	118
28	Lanao del Sur II	Very Large	North Malabang	Jose Abad CES	133740 - Jose Abad Sar	1586	150
29	Maguindanao I	Small	South Upi	Eliseo C. Sioson Sr. ES	134269 - Eliseo C. Sios	254	47
30	Maguindanao I	Small	South Upi	Pilar ES	134263 - Pilar ES	248	53
31	Maguindanao I	Medium	Rajah Buayan	Pidsandawan ES	134191 - Pidsandawan E	388	83
32	Maguindanao I	Medium	Mangudadatu	Kalian ES	216587 - Kalian ES	451	86
33	Maguindanao I	Large	Guindulungan	Tambunan CES	134203 - Tambunan CE	775	145
34	Maguindanao I	Large	Datu Saudi Am	Dapiawan ES	133968 - Dapiawan CES	618	134
35	Maguindanao I	Very Large	Shariff Aguak	Shariff Aguak CES	134049 - Shariff Aguak	1165	198
36	Maguindanao I	Very Large	Buluan	Datu Luminog PES	133935 - Datu Luminog	1825	304
37	Maguindanao II	Small	Parang North	Miramar ES	134101 - Miramar Eleme	299	50
38	Maguindanao II	Small	DOS North	Tanuel ES	134005 - Tanuel ES	274	58
39	Maguindanao II	Medium	Kabuntalan South	Kabuntalan CES	134029 - Kabuntalan CE	500	72
40	Maguindanao II	Medium	Buldon West	Edbul ES	133917 - Edbul ES	379	71
41	Maguindanao II	Large	Barira	Barira CES	133893 - Barira CES	559	81
42	Maguindanao II	Large	Sultan Kudarat	Pinaring ES	134153 - Pinaring ES	736	94
43	Maguindanao II	Very Large	Upi North	Nuro CES	134234 - Nuro CES	1684	213
44	Maguindanao II	Very Large	DOS South	Dalican Pilot ES	134015 - Dalican Pilot E	2445	379
45	Marawi City	Medium	North District	Nanapun ES	134942 - Nanapun Elem	466	59
46	Marawi City	Medium	West District	Abdulazis ES	134948 - Abdulazis ES	503	62
47	Marawi City	Large	Angoyao East	Sugod CES	134920 - Sugod Central	708	100
48	Marawi City	Very Large	North District	Amal Pakpak CES	134934 - Amal Pakpak C	3419	506
49	SGA	Small	Pigcawayan West	Libungan Torreta ES	130290 - Libungan Torre	220	22
50	SGA	Medium	Midsayap West	Nabalawag ES	130219 - Nabalawag ES	429	43
51	SGA	Medium	Kabacan West	Nangaan ES	130019 - Nangaan ES	453	38
52	SGA	Large	Pikit South	Dagadas ES	207574 - Dagadas Elem	698	62
53	Sulu	Small	Parang	Saldang ES	134539 - Saldang ES	276	49
54	Sulu	Medium	Indanan	Bato-Bato ES	134296 - Bato-Bato ES	506	95
55	Sulu	Large	Jolo II	Dandan Ututalum Eleme	134342 - Dandan Ututal	772	141
56	Sulu	Very Large	Patikul	Don Jose Godinez ES	134552 - Don Jose Godi	1195	271
57	Tawi-Tawi	Small	Languyan	Datu Maulana ES	134786 - Datu Maulana	232	45
58	Tawi-Tawi	Medium	Panglima Suga	Panglima Jalman ES	134705 - Panglima Jalm	495	110
59	Tawi-Tawi	Large	Languyan	Adzhar ES	134779 - Adzhar ES	584	145
60	Tawi-Tawi	Very Large	Bongao I	Tubig Tanah Pilot Eleme	134725 - Tubig Tanah P	1024	137

7287

Possible replacement schools

Number	Division	District	School	Category	Number of enrollment (2021-2022)	Grade 6 Enrolled (2022-2023)	
1	Basilan	Tipo-Tipo West	Tipo-Tipo CES	133176 - Tipo-Tipo CES	Very Large	1233	200
2	Cotabato City	Cotabato City I	Datu Usman ES	131260 - Datu Usman Ele	Large	839	88
3	Lamitan City	Lamitan Central	B. Aldana CES	132991 - B. Aldana Centr	Very Large	1000	141
4	Lanao del Sur I	Balindong II	Balindong CES	133225 - Balindong CES	Very Large	898	122
5	Lanao del Sur II	Sultan Gumand	Miguel Anton ES	133828 - Miguel Anton ES	Very Large	1013	149
6	Maguindanao I	Mamasapano	Libutan ES	134132 - Libutan ES	Very Large	1532	183
7	Maguindanao II	Sultan Kudarat	Maguindanaon	134147 - Maguindanaon I	Very Large	1338	153
8	Marawi	Angoyao District	Angoyao CES	134910 - Angoyao Centra	Very Large	1261	132
9	SGA	Carmen South	Nasapian ES	129987 - Nasapian ES	Large	705	50
10	Sulu	Jolo I	Mohammad Tulawie CES	134336 - Mohammad Tulawie CES		1622	245
11	Tawi-Tawi	Bongao	Salamat ES	134903 - Salamat ES		823	116