



Republic of the Philippines
Bangsamoro Autonomous Region in Muslim Mindanao
Ministry of Basic, Higher and Technical Education
 Cotabato City



Office of the Minister

REGIONAL MEMORANDUM

No. 837
 Series of 2023

Bangsamoro Autonomous Region in Muslim Mindanao
 Ministry of Basic, Higher and Technical Education
 OFFICE OF THE MINISTER

RELEASED

BY: Hajir
 DATE: NOV 03 2023
 TIME: 8:30 AM
 Ctrl. No. 2023-11-005

TO : **ALL DIRECTOR GENERALS
 ALL DIVISION AND SECTION CHIEFS
 ALL OTHERS CONCERNED**

FROM : **MOHAGHER M. IQBAL**
 Minister

SUBJECT : **SUBMISSION OF 2023 ASSESSED ACTIVITIES, PROGRAMS, AND
 PROJECTS USING THE HGDG TOOL FOR GAD ACCOMPLISHMENT
 REPORT**

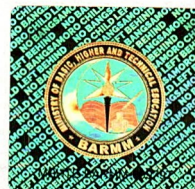
DATE : October 24, 2023

1. The Ministry of Basic, Higher and Technical Education (MBHTE) aims to integrate Gender Sensitive aspects in all its programs to ensure that gender biases are eradicated and release the potential of each employee so they can perform active roles in the development process.
2. As a result, all concerned subsectors and divisions are hereby directed to submit their assessed activities, programs, and projects using the Harmonized Gender and Development tools, as well as the complete attachment of approved budgetary proposals and Activity Rationale, including any other documentation that can justify the presence of men and women in the activity, program, and projects.
3. All required documents must be submitted directly to the MBHTE Gender and Development (GAD) Unit **on or before November 27, 2023**.
4. Should you have concerns or other inquiries, kindly contact the MBHTE GAD at mobile no. 0966-162-2205 or email gadoffice.depedarmm@gmail.com.
5. For information and strict compliance.

Republic of the Philippines
 Bangsamoro Autonomous Region in Muslim Mindanao
 Ministry of Basic, Higher and Technical Education
INFORMATION AND COMMUNICATIONS DIVISION
 Office of the Minister
RELEASED
 By: Nelson
 Date: NOV 03 2023
 Time: 8:35 AM
 Control No. 2023-11-005

By Authority of the Minister
MOHAGHER M. IQBAL:


HARON S. MELING, JR., Sh.C.
 Deputy Minister



GAD CHECKLIST FOR EDUCATION PROJECTS

Education projects or projects for the education sector encompass construction of facilities (infrastructure), technical assistance for a sectoral review or preparation of a sector plan, development or revision of curricula or educational materials, scholarships, and training of teachers and other education sector officials and personnel. The assistance may be for the entire sector, formal or informal education, or a particular level of formal education (elementary, secondary, or tertiary).

GENDER ISSUES AND GENDER EQUALITY RESULTS

Education projects in the Philippines have to contend with a number of interrelated gender issues (NCRFW 2004), including the following:

- Deteriorating quality of education at all levels particularly in the rural areas, as better quality schools are found in town centers or urban areas. In areas with high indigenous people's populations, the distance from school and indifference to girls' education are unfavorable to females.
- Wide variations in literacy among regions. National female and male literacy rates are about the same, but some areas have significantly lower figures. Literacy rates are lowest in the Autonomous Region in Muslim Mindanao (ARMM) and areas in Mindanao under armed conflict, with female literacy rates significantly lower than those of the males. Low male literacy rate is associated with the recruitment of men at a very young age to join armed groups.
- Generally, higher school dropout among boys, as they leave school to work in the farms, factories, markets, piers, or the streets. School participation of children is often bound with their work responsibilities to their family.
- More women than men reach the tertiary education level, but women tend to flock into business administration and other overcrowded stereotyped "feminine" fields (teachers' training, nursing, midwifery).
- Despite efforts to revise the curricula and instructional materials at various levels, these materials continue to promote gender stereotypes, influencing young people's career choices.
- Gender-based harassment among students, of students by teachers, and of teachers by their superiors.
- While there are more women than men among teachers, decision making in the sector remains a male preserve.

Recognition by program or project designers of the various gender issues that persist nationally and in specific areas of the country can help them develop interventions that will ultimately improve the level and quality of education of women and men alike. Education programs and projects may be designed to enable young children—boys especially—to attend school at the same time that they help their families earn a living, make better school facilities accessible to rural females and males, and improve the gender-responsiveness of the

education sector. In some areas, constraints to girls' access to education may be addressed through the physical design of schools, availability of woman teachers from the same cultural or religious group, or campaign to integrate the girls in the public school system. **Gender equality results** of education programs or projects may include:

- longer stay in school of boys, where male school dropout rate is particularly high;
- increased enrolment of girls, where there are barriers to female entry in the existing school system;
- improved school performance of male and female students;
- greater access of rural females and males to good quality education;
- increased capacity of women to influence decisions in the education sector;
- improved capacity of public and private schools at all levels to address gender issues in the classroom and in the campus; and
- improved capacity of agencies in the education sector to plan, design, implement, and monitor programs and projects that address gender issues and the concerns of different stakeholders.

GENDER ANALYSIS QUESTIONS

Gender analysis is required at two points of the project preparation stage: as part of project identification, and after the project has been designed. Box 4 (page 8), Part I, of this manual suggests key questions for gender analysis as part of analysis of the development problem, while box 12 offers a summary of the core gender analysis questions for assessing the gender impact of the proposed health project, as designed. Other questions that may be asked are:

Gender division of labor and gender needs

- Has an assessment been made of the education and training needs (curricula, teaching methods, schedules) of women and men? Of girls and boys?
- Does the project address the different education and training needs of women and men? For instance, are households in the project area dependent on the work of girls or boys for income? If so, will flexible education schedules help females or males in their other tasks?
- Does the project recognize and accommodate the different roles of women and men? Of their roles in the management of educational and training programs and institutions?
- Does the project (through curricula, instructional materials, role models, and skills training) provide opportunities for expanding the roles and career options of young women and men?
- Has consideration been given to how women may be supported in their role of providing socialization and tutoring children to become good citizens, workers, and human beings?

Access to and control of educational services and benefits

- Does the project ensure that opportunities for training and scholarships are equally accessible to women and men, girls and boys? To rural as well as urban females and males? To different categories of females and males (rural/urban, ethnic groups)?

- Is information about educational opportunities readily available to females and males?
- Have all methods of education delivery been considered to ensure access to education by girls and boys, young women and men, who may otherwise not be able to attend school?

Constraints to participation

- Has the project addressed any time and distance constraint so that girls and boys could attend class?
- Are there societal attitudes or cultural factors that prevent girls or young women, or boys or young men, from attending school or a training program? Has the project addressed these constraints?
- Has the project considered financial costs of participation that may restrict attendance of females or males?
- Will the project improve women's representation in education boards?
- Has the project considered financial costs of participation that may increase women's and men's access to the project's training services or facilities?
- Will women's participation in the project affect the attitudes of women and men toward women?

GUIDE FOR ACCOMPLISHING THE CHECKLIST

Box 12 lists the ten elements or requirements for a gender-responsive education project. Each requirement is generally accompanied by a set of guide questions. The scoring system is the same as that in boxes 5 and 6, while the interpretation of the total score is the same as that in box 7. The guide for accomplishing the checklist and the interpretation of the total GAD rating are reproduced below for easy reference.

Guide for accomplishing box

12

1. Put a check in the appropriate column (2a to 2c) under "Response" to signify the degree to which a project proponent has complied with the GAD element: under col. 2a if nothing has been done; under col. 2b if an element, item, or question has been partly answered; and under col. 2c if an element, item, or question has been fully complied with.
2. A partial and a full yes may be distinguished as follows.
 - a. For *Element 1.0*, a "partly yes" to Question 1.1 (or Q1.1) means meeting with male officials and only a woman or a few women who also happen to be officials in the proponent or partner agency or organization; or with male and female officials and some male beneficiaries. In contrast, full compliance involves meeting with female and male officials and consulting other stakeholders, including women and men that may be affected positively or negatively by the proposed project. A "partly yes" to Q1.2 means inputs or suggestions may have been sought from woman and man beneficiaries but are not considered at all in designing project activities, choosing and locating facilities, and selecting types of capacity development activities. A "partly yes" to Q1.3 means only certain groups of women and men are viewed as stakeholders and agents of change.
 - b. For *Element 2.0*, "partly yes" means some information has been classified by sex but may not be key to helping identify key gender issues that a planned project must address. In

contrast, a full "yes" implies that qualitative and quantitative data are cited in the analysis of the development issue or project.

- c. For *Element 3.0*, a "partly yes" means a superficial or partial analysis has been done by focusing on only one or two of the concerns (gender roles, needs, perspectives, or access to and control of resources).
 - d. For *Element 4.0*, "partly yes" means women are identified in the project objectives but only in connection with traditional roles or economic activities (Q4.1); or the project has token gender equality outputs or outcomes (Q4.2). A full "yes" to Q4.1 signifies that women's nontraditional roles are also recognized, while a full "yes" to Q4.2 denotes that gender equality outcomes and outputs are consistently pursued in the logframe.
 - e. For *Element 5.0*, "partly yes" means having gender equality strategies or activities but no stated gender issues to match the activities, while a full "yes" means there is an identified gender issue and there are activities seeking to address these issues.
 - f. For *Element 6.0*, a "partly yes" response to any of the items and questions is associated with superficial or partial effort to address a specific issue or question. In contrast, a full "yes" involves a coherent, if not a comprehensive, response to the question.
 - g. For *Element 7.0*, "partly yes" means the project monitoring plan includes indicators that are sex-disaggregated but no qualitative indicator of empowerment or status change.
 - h. For *Element 8.0*, "partly yes" means the project requires the collection of some sex-disaggregated data or information but not all the information that will track the gender-differentiated effects of the project. A full "yes" means all sex-disaggregated data and qualitative information will be collected to help monitor GAD outcomes and outputs.
 - i. For *Element 9.0*, "partly yes" means there is a budget for GAD-related activities but this is insufficient to ensure that the project will address relevant gender issues (Q9.1), or build GAD capacities among project staff or the project agency or tap external GAD expertise (Q9.2).
 - j. For *Element 10.0*, a "partly yes" response to Q10.1 means there is a mention of the agency's GAD plan but no direct connection is made to incorporate the project's GAD efforts into the plan; to Q10.2 means there is a mention of other GAD initiatives in the project coverage but no indication of how the project will build on these initiatives; and to Q10.3 means the project has a sustainability plan for its GAD efforts but makes no mention of how these may be institutionalized within the implementing agency or its partners.
3. After ascertaining whether a GAD requirement has been done or not, enter the appropriate score for an element or item under column 3.
- a. To ascertain the score for a GAD element, a three-point rating scale is provided: "0" when the proponent has not accomplished any of the activities or questions listed under an element or requirement; a score that is less than the stated maximum when compliance is only partial; and "2" (for the element or requirement), or the maximum score for an item or question, when the proponent has done all the required activities.
 - b. The scores for "partly yes" differ by element. For instance, the score for "partly yes" for Elements 2.0, 3.0, 5.0, 7.0, and 8.0 is "1." For elements with two or more items or questions (such as Element 1.0), the rating for a "partial yes" is the sum of the scores of the items or questions that falls short of the maximum "2."
 - c. For Element 9.0, which has two items (9.1 and 9.2), the maximum score **for each item** is pegged at "1.0" and "partly yes" is "0.5." Hence, if a project scores a full "1.0" in one question but "0" in the other, or if a project scores "partly yes" (or "0.5") in each of the two items, the total rating for Element 9.0 will be "partly yes" with a score of "1.0." If a project

Dimension and question (col. 1)	Response (col. 2)			Score for the item/element (col. 3)	Result or comment (col. 4)
	No (2a)	Partly yes (2b)	Yes (2c)		
Project design					
4.0 Gender equality goals, outcomes, and outputs (max score: 2; for each item, 1)					
4.1 Do project objectives explicitly refer to women and men as students, parents, teachers, or administrators? (possible scores: 0, 0.5, 1.0)					
4.2 Does the project have gender equality outputs or outcomes? (see text for examples) (possible scores: 0, 0.5, 1.0)					
5.0 Matching of strategies with gender issues (possible scores: 0, 1.0, 2.0) Do the strategies match the gender issues and gender equality goals identified? That is, will the activities or interventions reduce gender gaps and inequalities?					
6.0 Gender analysis of the designed project (max score: 2)					
6.1 <i>Gender division of labor</i> (max score: 0.67; for each question, 0.22)					
6.1.1 Are families in the target community reliant on the work of girls or boys for income? IF SO: Will flexible education schedules help females or males fit in their other tasks? (possible scores: 0, 0.11, 0.22)					
6.1.2 Does the project offer opportunities (through curricula, instructional materials, role models) for expanding roles of women and men, girls and boys, at home and in the community, economy, and society? (possible scores: 0, 0.11, 0.22)					
6.1.3 Has an assessment been made of the education and training needs of both females and males? (possible scores: 0, 0.11, 0.22)					
6.2 <i>Access to and control of resources</i> (max score: 0.67; for each question, 0.22)					
6.2.1 Does the project ensure that opportunities for training and scholarships that may be provided are equally accessible to women and men, girls and boys? To different categories of females and males (rural/urban, ethnic groups)? (possible scores: 0, 0.11, 0.22)					
6.2.2 Is information about educational opportunities readily available to females and males? (possible scores: 0, 0.11, 0.22)					
6.2.3 Have all methods of education delivery been considered? (possible scores: 0, 0.11, 0.22)					

Dimension and question (col. 1)	Response (col. 2)			Score for the item/element (col. 3)	Result or comment (col. 4)
	No (2a)	Partly yes (2b)	Yes (2c)		
6.3 <i>Constraints</i> (max score: 0.67; for each item, 0.33)					
6.3.1 Has the project addressed any time and distance constraint so that girls and boys could attend class? (possible scores: 0, 0.17, 0.33)					
6.3.2 Has the project considered the financial costs of participation that may restrict attendance of females or males? (possible scores: 0, 0.17, 0.33)					
7.0 <i>Monitoring targets and indicators</i> (possible scores: 0, 1.0, 2.0) Does the project include gender equality targets and indicators for welfare, access, consciousness raising, participation, and control? Examples of gender differences that may be monitored:					
<ul style="list-style-type: none"> - Net enrolment or school participation rate - Passing rate for female and male students (NEAT, NSAT, HSRT) - Participation in training and similar project activities, by type of training or activity - Employment generated by the project 					
8.0 <i>Sex-disaggregated database</i> (possible scores: 0, 1.0, 2.0) Does the proposed project monitoring framework or plan include the collection of sex-disaggregated data?					
9.0 <i>Resources</i> (max score: 2; for each item, 1)					
9.1 Is the budget allotted by the project sufficient for gender equality promotion or integration? (possible scores: 0, 0.5, 1.0)					
9.2 Does the project have the expertise to integrate GAD or promote gender equality and women's empowerment? OR, is the project committed to investing project staff time in building capacity for integrating GAD or promoting gender equality? (possible scores: 0, 0.5, 1.0)					
10.0 <i>Relationship with the agency's GAD efforts</i> (max score: 2; for each item or question, 0.67)					
10.1 Will the project build on or strengthen the agency/PCW/government's commitment to the advancement of women? (possible scores: 0, 0.33, 0.67)					
				Response (col. 2)	Score

Dimension and question (col. 1)	No (2a)	Partly yes (2b)	Yes (2c)	for the item/ element (col. 3)	Result or comment (col. 4)
10.2 Does the project have an exit plan that will ensure the sustainability of GAD efforts and benefits? (possible scores: 0, 0.33, 0.67)					
10.3 Will the project build on the initiatives or actions of other organizations in the area? (possible scores: 0, 0.33, 0.67)					
TOTAL GAD SCORE - PROJECT IDENTIFICATION AND DESIGN STAGES (Add the score for each of the 10 elements, or the figures in the thickly bordered cells.)					

Interpretation of the GAD score

- 0 - 3.9 GAD is invisible in the project (proposal is returned).
- 4.0 - 7.9 Proposed project **has promising GAD prospects** (proposal earns a "conditional pass," pending identification of gender issues and strategies and activities to address these, and inclusion of the collection of sex-disaggregated data in the monitoring and evaluation plan).
- 8.0 - 14.9 Proposed project is **gender-sensitive** (proposal passes the GAD test).
- 15.0 - 20.0 Proposed project is **gender-responsive** (proponent is commended).